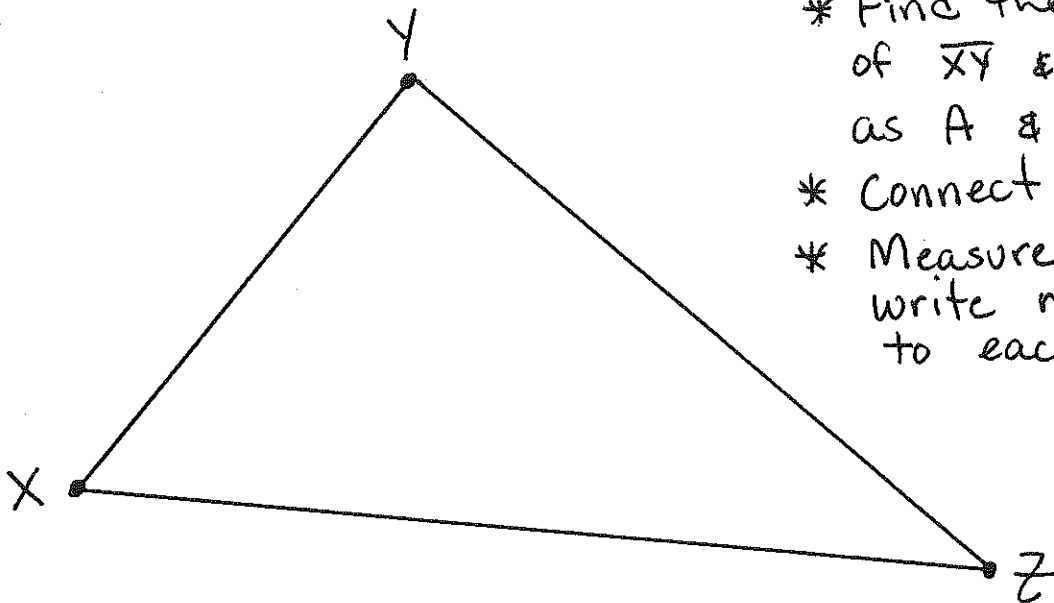


5-1 Examples

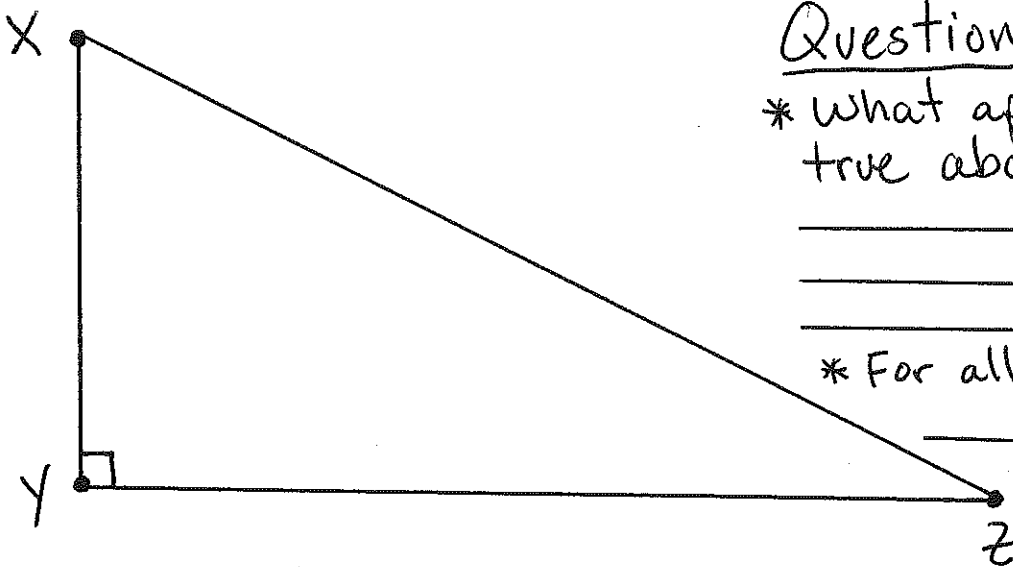
Directions

- * Find the midpoints of \overline{XY} & \overline{YZ} . Label as A & B.
- * Connect A & B.
- * Measure \overline{AB} & \overline{XZ} & write number next to each segment.

①



②



Questions

* What appears to be true about \overline{AB} & \overline{XZ} ?

* For all triangles?

③

